

THE PALLET EVOLUTION

the new low-cost steel pallet
patented



made in Italy



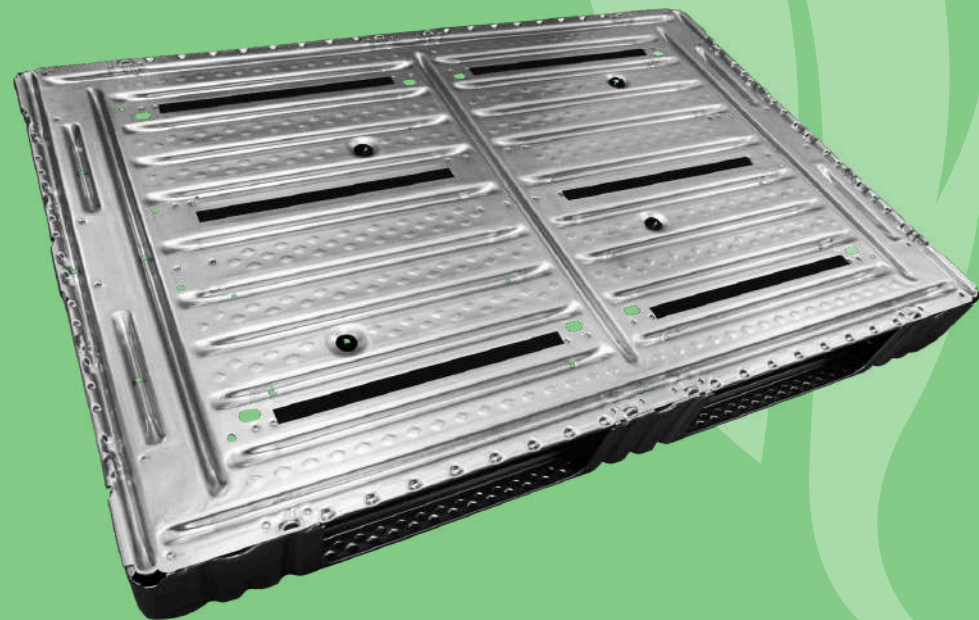
STRONG SUSTAINABLE COST-EFFICIENT

Evopallet represents a **patented breakthrough** in the pallet industry. Constructed from **hot-dip galvanised sheet metal** through fully automated processes, it delivers high efficiency and cost-effectiveness while ensuring hygiene and complete fire resistance. These characteristics make Evopallet a true benchmark for those seeking quality and innovation.

OUR RANGE

80x120 format

BASIC



12.7 kg

DYNAMIC 1500 KG
RACKING 1000 KG
STATIC * 4000 KG

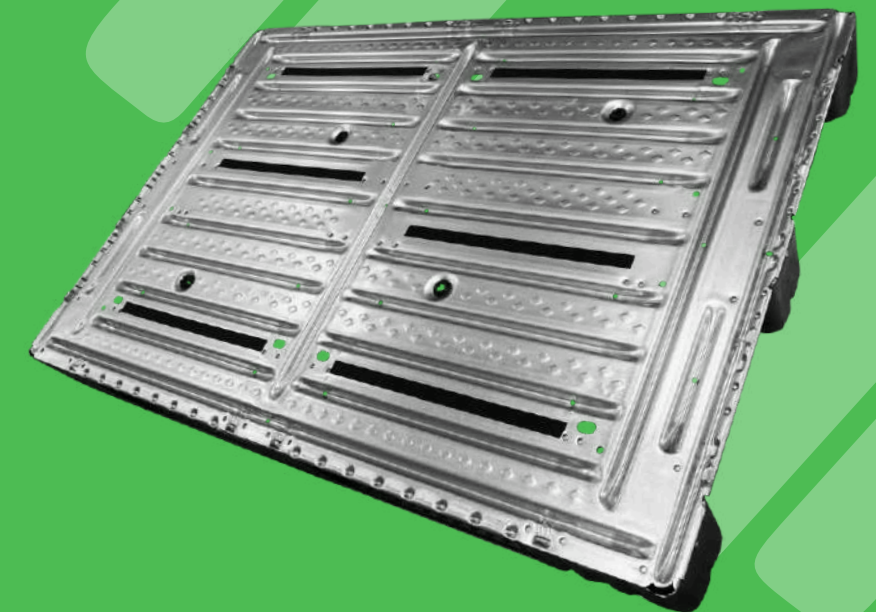
PRO



15.7 kg

DYNAMIC 1750 KG
RACKING 1750 KG
STATIC * 5000 KG

PLUS



19.5 kg

DYNAMIC 2000 KG
RACKING 2000 KG
STATIC * 6000 KG

* with evenly distributed load
TEST UNI EN ISO 8611 2022

COMPETITIVE PRICING & RECYCLING VALUE

Competitively priced, with up to **20%** of the cost **recovered through recycling**, a **value** that can be passed on to the customer **as a deposit**, and reclaimed when they recycle.



FIREPROOF & HYGIENIC BY DESIGN

Being **fireproof**, Evopallet reduces fire load and helps lower fire prevention system costs. Its **splinter- and dust-free** metal structure, together with the fact that it requires **no fumigation**, makes Evopallet an ideal solution for the food, chemical, and pharmaceutical industries.

IDEAL FOR AUTOMATED LOGISTICS

4-way entry design and fork openings **compliant** with international logistics **standards**. **Half** the **deflection** of conventional pallets, with no permanent deformation.





TEMPERATURE RESISTANCE & OUTDOOR STORAGE

Resistant to extreme temperature fluctuations (**from -50°C to +300°C**), Evopallet is suitable for both **cold rooms** and **outdoor storage**.

EPAL STANDARDS WITH REDUCED WEIGHT

EPAL standard dimensions with a significantly **reduced weight** of just **12–19 kg**.
The 12 mm top deck (vs. 44 mm for EPAL pallets) optimises available cargo volume.

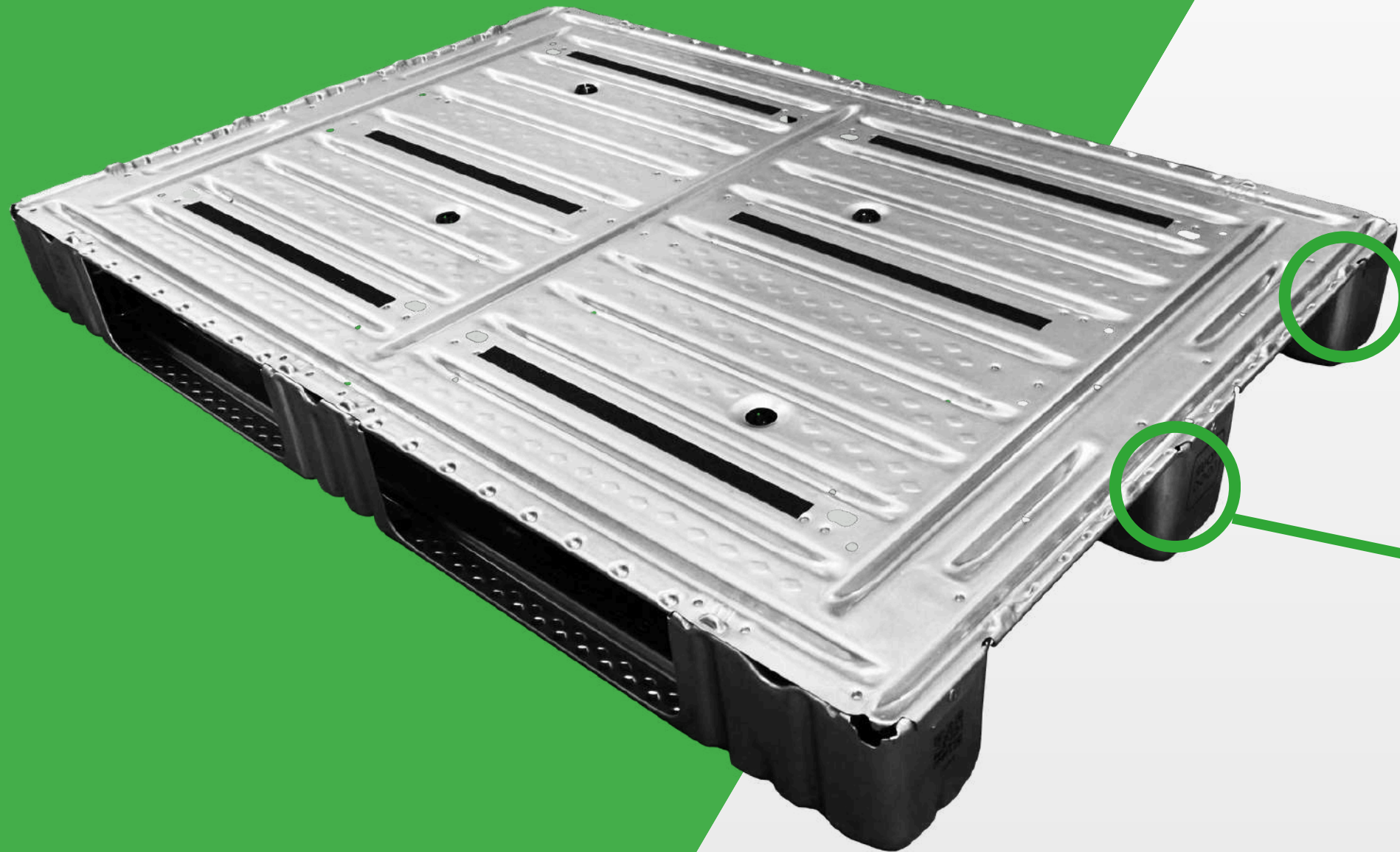


SUSTAINABLE & SOLAR-POWERED PRODUCTION

100% recyclable and made using solar energy, Evopallet reduces deforestation and cuts CO₂ emissions.

SMART

Each Evopallet features a QR code which can be linked to a **dedicated link** for real-time updates on product data, status, and location, simplifying warehouse management. Accurate reading is guaranteed even with partial code damage.



QR CODE/BARCODE
as a standard
no. 4 (1 per side)

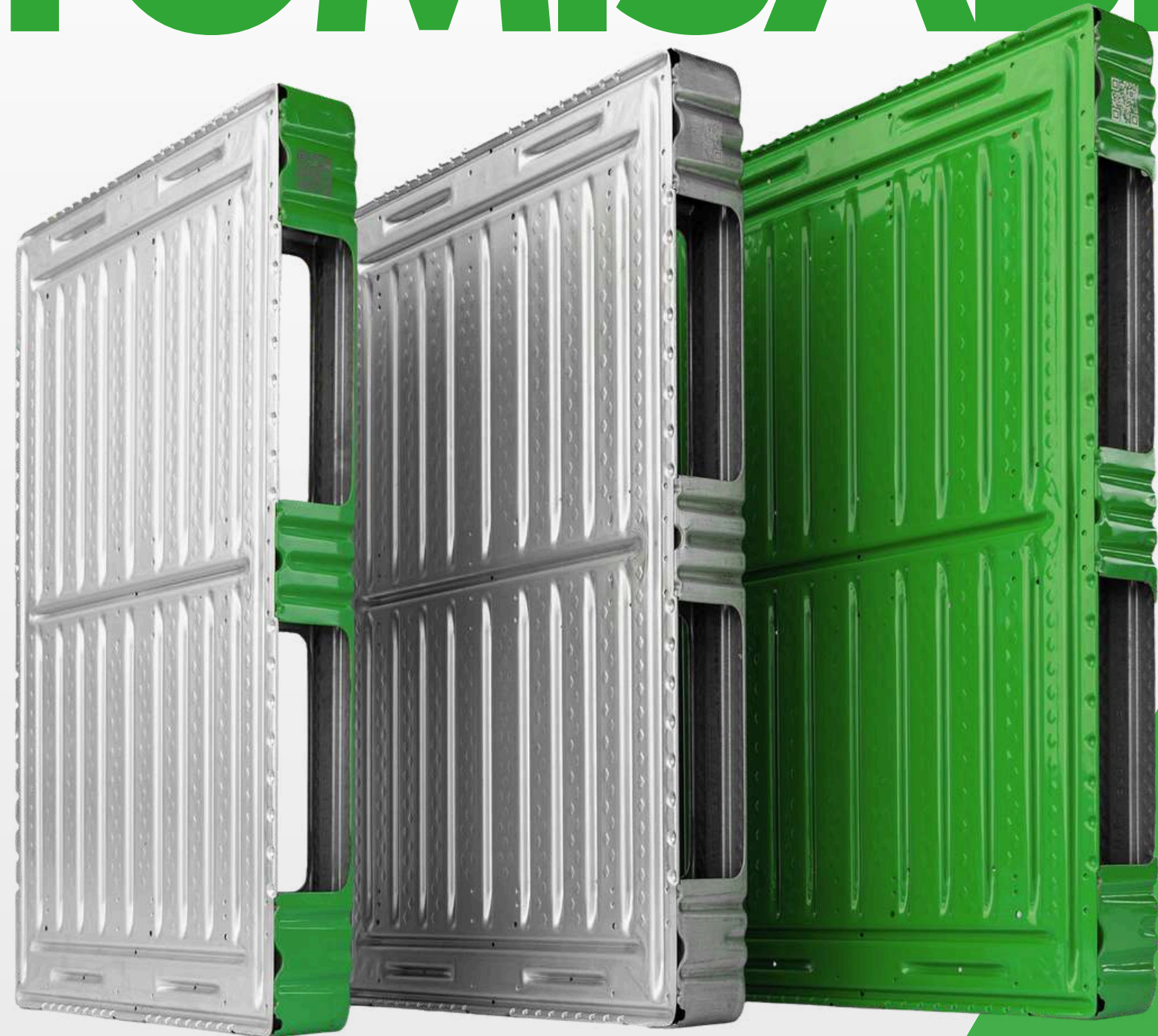


YOUR COMPANY
LOGO
no. 2 (short sides)

EXTRA FEATURES CUSTOMISABLE

For enhanced corrosion resistance, Evopallet is also available with a **zinc-magnesium coating**, ensuring superior durability even in the most demanding environments.

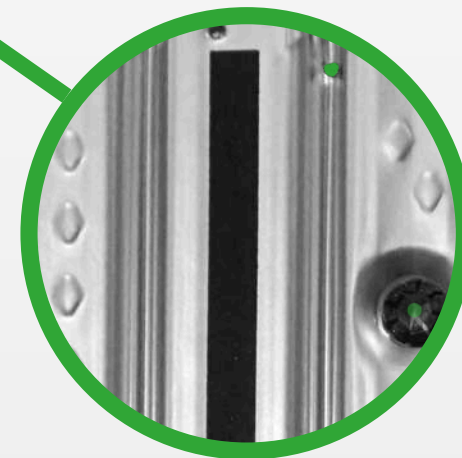
Evopallet can also be **customised** in both the **colour** of the **runners** and the **top deck**. This option is designed for companies that want to streamline logistics management at a glance and strengthen their brand's visual identity.



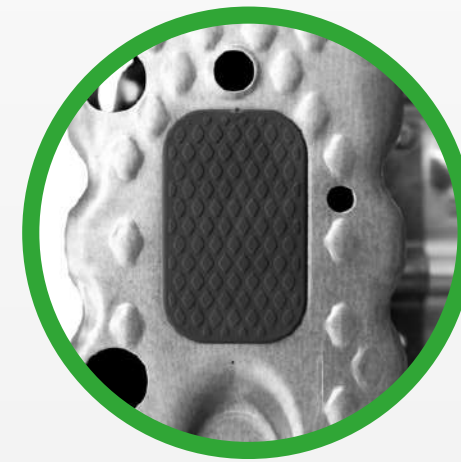
EXTRA FEATURES

PADS & STRIP

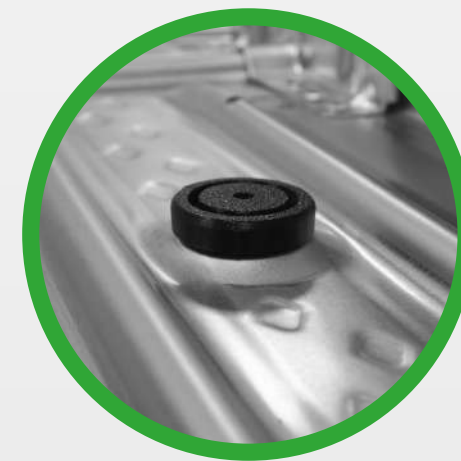
Designed to **increase** Evopallet's **grip** on the ground, on forklift forks, and between the pallet and the load.



NON-SLIP STRIPS



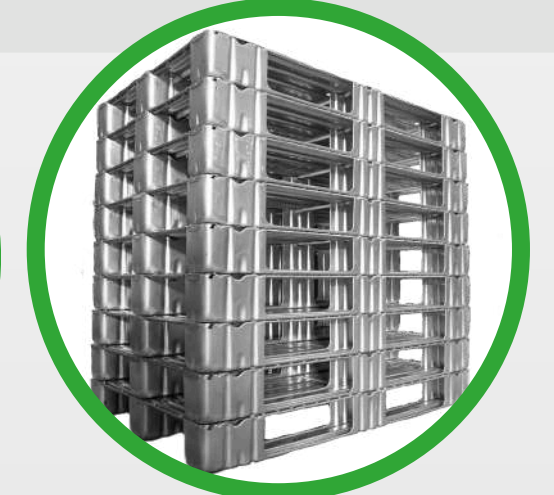
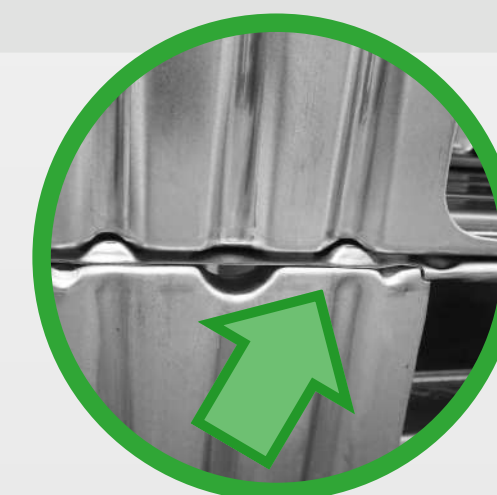
NON-SLIP PADS



EXTRA FEATURES PERIMETRAL EMBOSSING



Designed for **handling and securing crates**, they also enhance stacking efficiency.





**DYNAMIC
LOAD CAPACITY**



**CANTILEVER RACKING
LOAD CAPACITY**



**STATIC
LOAD CAPACITY**



* the load capacities shown apply to the Evopallet PLUS

DEPRECIABLE long-lived asset

reduce
costs related
to fire load
of

76%



cut
warehouse
cleaning costs
of

54%

* The figures displayed are based on estimates derived from online averages, and may vary depending on specific operational conditions



* Image for illustrative purposes only.
Product under development; final
version may differ.



Industrial Format
100x120

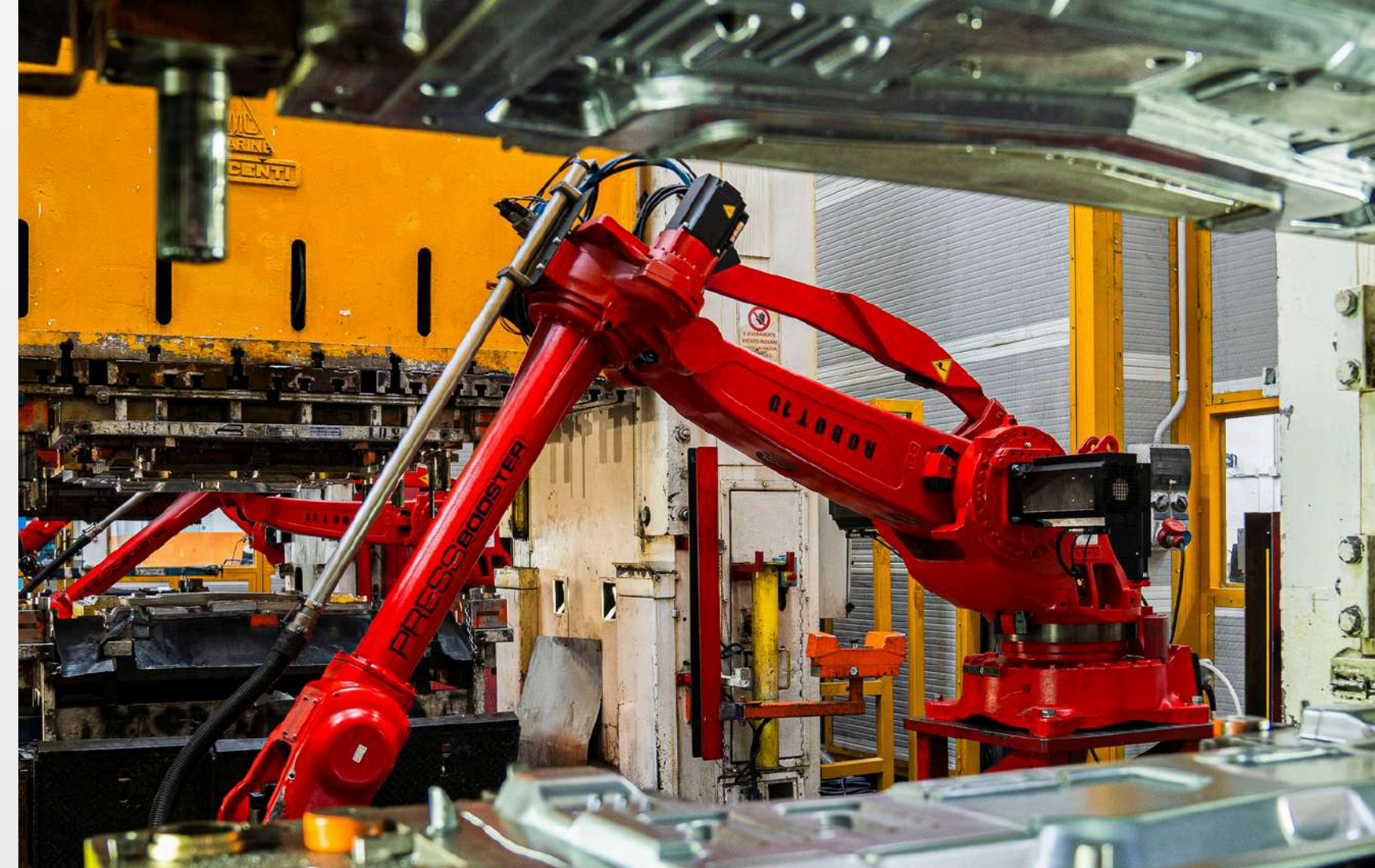
▶▶▶ **COMING SOON**

ABOUT US ▶

SPL Industries is a company with a **40-year** track record of excellence in the field of cold sheet metal forming, operating in a wide range of sectors. Over the years, SPL has firmly established its position as an industry leader by developing all the production process phases in-house, from product study and construction of production equipment to stamping and assembly, coating and final quality control.

To maintain its position as a **market leader** and ensure the **highest quality standards**, SPL has implemented the latest **automation** technologies with **state-of-the-art robotic systems**.

The company's unique vision, streamlined structure and specialised team have enabled the successful development and patenting of the pioneering **Evopallet** design.



▶ **SHOULD YOU HAVE ANY QUESTIONS,
DO NOT HESITATE TO CONTACT US**



www.evopallet.com



LinkedIn / Evopallet



sales@evopallet.com



**+39 0733 960996 Ext. 202
+39 392 9160436**



**Contrada Rotondo, 10
62029 Tolentino (MC) - Italy**



a product of SPL Industries